

SPEC SHEET + MEASUREMENTS

PORT AUTHORITY.

Port Authority® Easy Care Extra Long Bib Apron with Stain Release. A700

Product photo



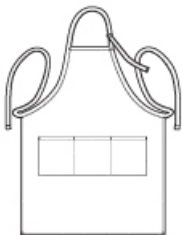
This extra-long apron offers protection from stains and wrinkles. The adjustable neck strap ensures a proper fit.

- 8-ounce, 65/35 poly/cotton twill
- Three front pockets
- 25"w x 34.5"l

CARE INSTRUCTIONS

Machine wash warm, do not bleach. Tumble dry low.

Sketches



front

SPEC SHEET + MEASUREMENTS

PORT AUTHORITY

Port Authority® Easy Care Extra Long Bib Apron with Stain Release. A700

PRODUCT MEASUREMENTS

OSFA

Length 34 1/2

Apron Waist Width 25

Apron Width at Top 9 1/2

Pocket Height 7

Pocket Width 21 1/2

Length: Measured from center front neck to hem.

Apron Waist Width: Measure under the waist straps straight across, edge to edge.

Apron Width at Top: Measure at top edge of apron, edge to edge.

Pocket Height: Measure from top to bottom at center.

Pocket Width: Measure from side to side at top edge.

COLORS



Black
PMS BLACK
C



Khaki
PMS 7531C



Navy
PMS 7547C



Red
PMS 200C



Royal
PMS 7687C



White